

Glider V-Tail Bellbird



MicronWings.com



The bellbird is an easy to build glider for the beginner to intermediate level builder. The construction is straight forward and all parts are pre cut to slot together easily. A limited amount of sanding is needed on the V-Tail section before gluing in place.

The kit features dihedral on the wingtips and these sections are pre-cut so all you need to do is to bend them upward, infuse some glue into the gap and allow to dry. We also provide an angle wedge which is used for the tail and wing tips to achieve the correct angle while drying.

Your kit contains the following items

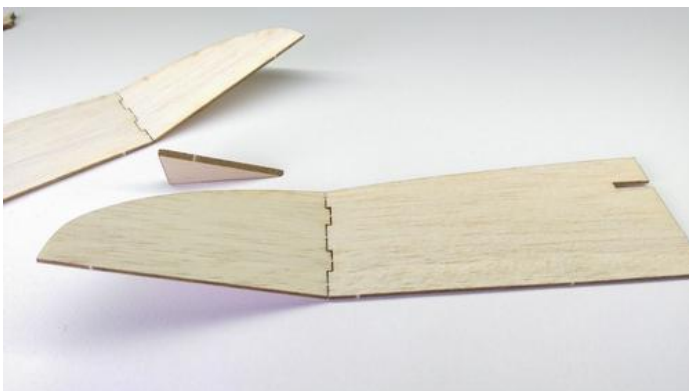
Pre- cut parts
Sandpaper sheets
Diagram sheet

Additional Items You May Need

- * Cling Wrap
- * Flat board (working surface)
- * Hobby Knife
- * Wood glue
- * BlueTack or putty
- * Tape

Build Procedure

Firstly it's a good idea to tape down a sheet of cling wrap over your work surface. This will stop the parts from becoming glued to the surface. It's easier to peel off cling wrap from any wooden parts.

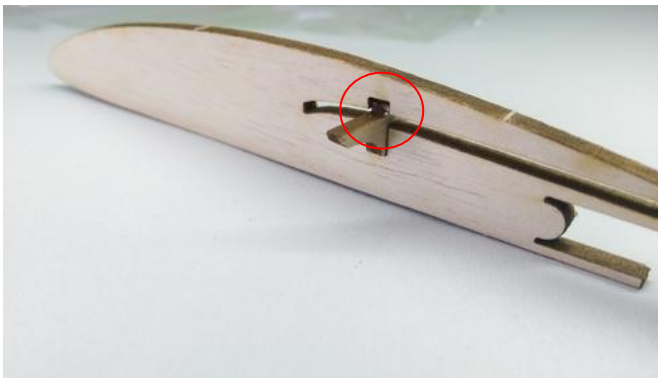


Bend up the wing tip pieces a little but not enough to completely detach them from the wing.

There is an angle guide included which can be placed under the wing tip to hold it at the correct angle while gluing.



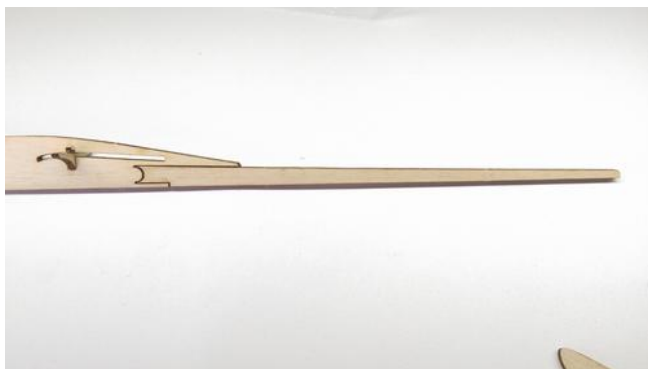
Support the wing tip with the angle guide and infuse glue into the joint and fill the gaps between the wing and wingtip. Wipe off any excess glue.



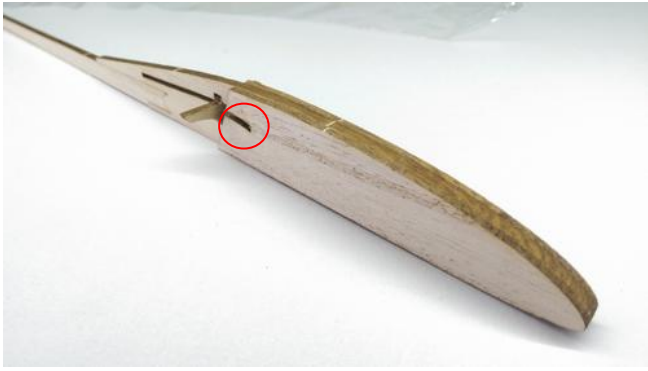
While the wings are drying glue in the wing support piece. This piece should block the wing slot gap here. Refer to the wings and note the slots in them to see how they fit into the wing support.



Check that the wing support is level before it dries.



Glue in place the tail shaft ensuring it is straight.



Glue on the nose cover sheets and make sure that excess glue is cleaned out of the wing gap here before it dries.



Sand the tail pieces at a small angle so when they are put flush up against the side of the fuselage, they form an upward angle.

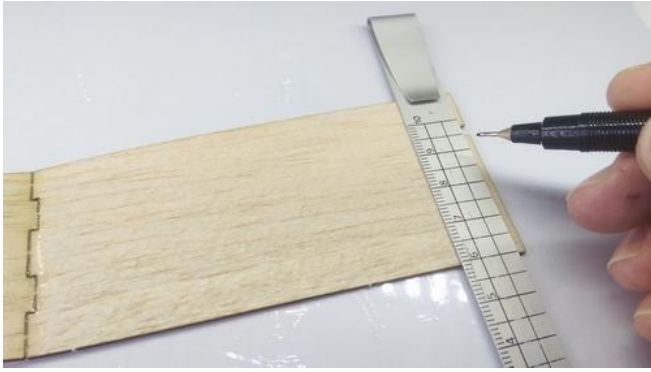


Use some blue tack or masking tape to secure the body to a flat surface and make sure it is exactly vertical.

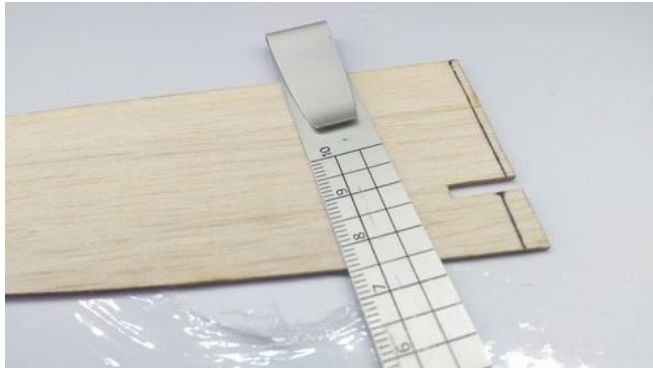
Then use the angle guide from the wing tips to set the angle of the tail pieces as they are drying. The tail pieces are glued to the side of the fuselage not to the top. Make sure they are flush with the bottom of the fuselage.



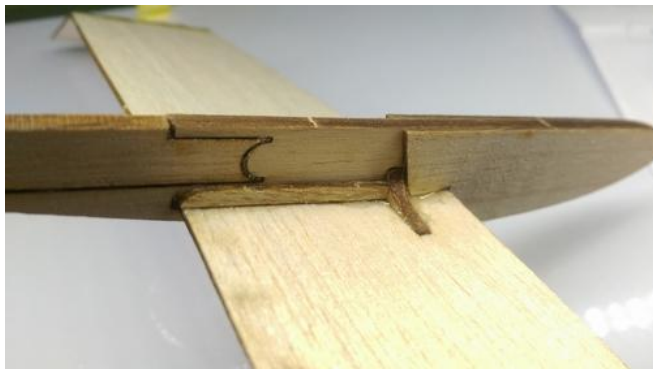
After they are glued on, run some more glue in the crevice for additional strength.



Each wing is inserted a few millimetres into the wing slot to meet in the middle. Draw some lines on the wings to act as a guide to let you know how far to insert each one.



With the lines drawn.



Carefully insert the wings into the slots and glue them in place.

Then glue in place these support pieces under the wings. The rounded end goes toward the back.



Finally give the plane a sand over to round off all the corners.

The wings and tailplane can be sanded on the top surface on the leading and trailing edge to form a slight airfoil shape. Your care and attention here will give better flight performance.